

Wavetronix DataCollector™

The scalable data management solution that easily integrates the Wavetronix SmartSensor™ into any ATMS environment.



Advantages:

- Collects and manages real-time traffic detection data
- Easily integrates sensor networks
- Auto-detection of sensor settings
- Web-based user interface allows remote management
- User-definable data sets in grid, graph or text form
- User-definable network access and privileges
- Collects data as frequently as 20 second intervals
- Manages system data logging processes
- Provides TMDD and other industry standard data formats
- Automatic time synchronization
- Enterprise quality, rack-mounted server with dual processors and redundant power

The affordable scalability of the Wavetronix DataCollector™ makes it easy to integrate the Wavetronix SmartSensor™, or other network-accessible sensors or cabinets, into any ATMS network. As part of the Wavetronix family of products, DataCollector defines the standard in real-time traffic data management by offering easy-to-use tools that collect, manage and distribute the most accurate data possible.

DataCollector is a system expansion solution that minimizes system downtime at a fraction of the price of custom developments. Scalability makes it possible to add or remove sensors from a network without requiring a complete redesign of legacy systems, and DataCollector integrates seamlessly into any TCP/IP network, so sensors can be remotely managed from any networked Web browser.

DataCollector gathers and manages real-time data from traffic detection networks at intervals as frequent as 20 seconds. It monitors specific sensor settings,

manages data logging processes and provides TMDD and other industry standard data formats for reliable data delivery and effective data sharing with other ITS applications, including traveler information systems.

DataCollector automatically detects the pre-configured settings of individual sensors and automatically synchronizes its clock with each sensor in the network to ensure that data logs are properly time-stamped. Logs can be exported as user-defined data sets that can be previewed in grid, graph or text form. Other user-definable management and administration functions include network access and assignment of user privileges.

Affordable scalability and easy integration make the Wavetronix DataCollector the most reliable and most cost-effective real-time data management tool available. Ask for a free demonstration and let us prove to you how DataCollector defines the standard in ITS data collection and management technologies.

380 South Technology Court
Lindon, UT 84042 USA
tel: (801) 764-0277 fax: (801) 764-0208
email: sales@wavetronix.com
www.wavetronix.com



Wavetronix DataCollector™ Specifications

The Wavetronix DataCollector is a hardware/software solution for collection and management of real-time data from ITS sensors. DataCollector integrates seamlessly into any TCP/IP network environment, so sensors can be remotely managed from any networked web-browser. DataCollector provides affordable system scalability to any ATMS environment.

Hardware:

Rack-mounted server, Dual 2.8 GHz Pentium Xeon or equivalent processors, 533 MHz front side bus, 1 GB of 133 MHz SDRAM memory, Dual Ethernet adapters, Raid 5 disk array, Hot Swappable SCSI Drives, Redundant 275 Watt, 110 Volt Power source, *Operating Temperature: 10°-35° C (50°-95° F)*, FCC Class A

Software:

Microsoft Windows 2000 server, Microsoft SQL Server 2000, Wavetronix DataCollector Command and Control

DataCollector Service:

- Collects real-time data from traffic sensor networks
- Collects time interval data as frequently as 20 seconds from each sensor
- Stores up to one week of time interval data into database for immediate access
- Queries multiple sensor protocols
- Synchronizes sensor's clock with the DataCollector
- Allows DataCollector Web interface immediate access to a sensor
- Optional Backup facility for indefinite data storage

DataCollector Monitor/Control Application:

- Start/Stop DataCollector service
- Start/Stop individual processes
- Changes settings for log files
- Changes configuration settings of the Data Collection Service
- DataCollector Web Interface
- Views current data from sensors
- Access sensors directly
- Allows for data retrieval
- Adds/Removes sensors from the system

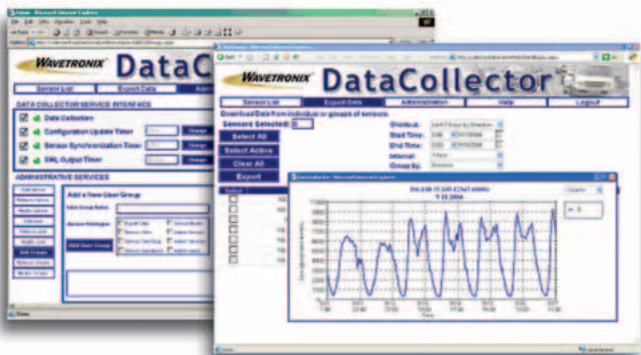
DataCollector Traffic Data Web Service

- Web service access to data stream
- Intuitive, easy to use interface
- Well documented API set

Full specifications available upon request.

DataCollector is fully compatible with all Wavetronix products:

- Wavetronix SmartSensor™, true eight lane detection of vehicle volume, occupancy and speed from the ITS industry's only patented auto-configuring and auto-calibrating traffic sensor.
- SmartSensor Advance™, the industry's only auto-configuring radar device that manages dilemma zones and efficiently controls intersections.
- Wavetronix Click!™ products: Simple connectivity solutions for contact closure, power and surge protection, data conversion and wireless & Ethernet communications.



Represented by:



Tel: 021 551 6092
Fax: 021 552 5681
info@tmtservices.co.za
Suite 305, Colosseum
Century City
7446